

## Digital Undercounter Refrigerated Counter Saladette - 250lt, 2 Doors (R290)

ITEM # \_\_\_\_\_

MODEL # \_\_\_\_\_

NAME # \_\_\_\_\_

SIS # \_\_\_\_\_

AIA # \_\_\_\_\_


**725106 (PTR259)**

2-door refrigerated Pizza Preparation Table with marble top 250lt, +2+10°C, AISI 304

### Short Form Specification

#### Item No.

Constructed entirely in 304 AISI stainless steel. Marble top. Can accommodate 5 GN 1/6 containers. High-density expanded polyurethane foam, 50 mm in thickness, with cyclopentane injection. Height-adjustable feet. Lower refrigerated compartment designed to accommodate GN 1/1 containers and equipped with N. 2 hinged doors. Built-in refrigeration unit. Ventilated. Refrigerant R290. Digital control panel. Automatic evaporation of defrost water. Drain outlet. Suitable to operate in ambient temperatures up to +43°C. Temperature range: +2+10°C. CFC and HCFC free.

### Main Features

- Adjustable temperature range from 2 °C to 10 °C to suit meat, fish and dairy storage requirements.
- Forced air circulation for rapid cooling and an even temperature distribution.
- Automatic evaporation of defrost water. Prearrangement for drain outlet.
- Connectivity ready for real time access to connected appliances from remote and data monitoring (requires optional accessory).
- Digital control panel.
- Anti-tilt runners accept GN 1/1 containers.
- Marble worktop suitable for 5 GN 1/6 containers.
- Tropicalized unit.

### Construction

- IPX3 protected.
- Access to all components from the front.
- Built-in compressor to suit operating conditions.
- Constructed from AISI 304 Stainless steel throughout to meet the highest hygiene standards.
- Developed and produced in ISO 9001 and ISO 14001 certified factory.
- Mounted on legs with height adjustment.
- Rounded internal corners for ease of cleaning.

### Sustainability

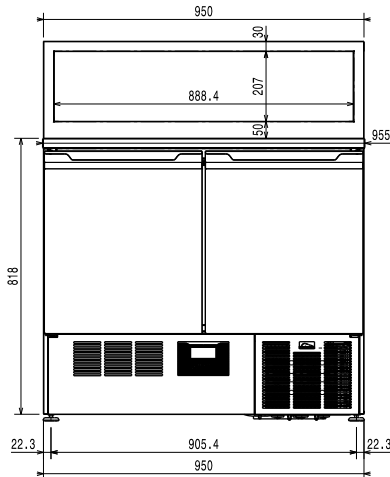
- CFC and HCFC free, highly ecological refrigerant type: R290 (ecological gas in foam: cyclopentane). Hydrocarbon refrigerant gas R290 for the lowest environmental impact (GWP=3), to reduce green house and ozone depletion effects.
- 50 mm insulation for energy saving.

### Optional Accessories

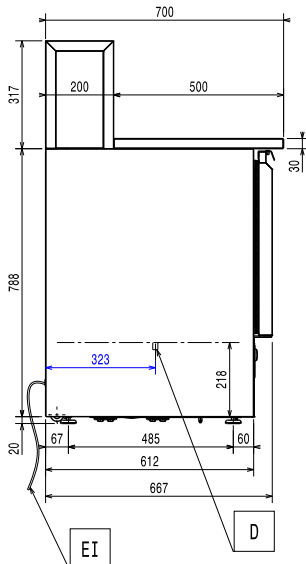
- 1/1GN grey rilsan grid PNC 881435

APPROVAL: \_\_\_\_\_

Front

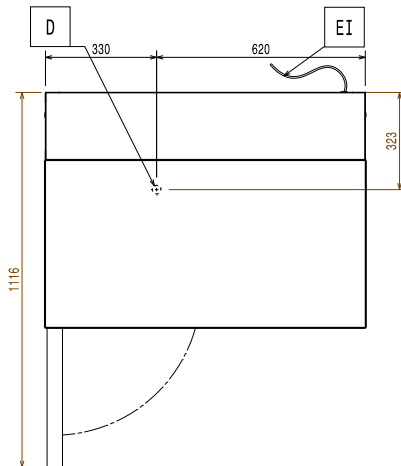


Side



EI = Electrical inlet (power)

Top



## Electric

**Supply voltage:**

725106 (PTR259)

220-240 V/1 ph/50 Hz

## Key Information:

<b>Gross capacity:</b>	250 lt
<b>Net Volume:</b>	140 lt
<b>Door hinges:</b>	1 Left+1 Right
<b>Built-in Compressor and Refrigeration Unit</b>	
<b>External dimensions, Width:</b>	950 mm
<b>External dimensions, Depth:</b>	700 mm
<b>External dimensions, Height:</b>	1125 mm
<b>Depth with doors open:</b>	1120 mm
<b>Height adjustment:</b>	0/0 mm

## Refrigeration Data

**Compressor power:** 1/5 hp

## ISO Certificates

**ISO Standards:** ISO 9001; ISO 14001; ISO 45001; ISO 50001

## Sustainability

<b>Refrigerant type:</b>	R290
<b>Refrigeration power:</b>	253 W
<b>Refrigerant weight:</b>	50 g